

VELOCITY CONTROL TECHNOLOGY



ADVANCED LABYRINTH TR DESIGN FOR SEVERE SERVIC APPLICATIONS



PRIM CE



VECTOR™ VELOCITY CONTROL TECHNOLOGY

Severe service valve applications, often associated with high pressure and/or high temperature are common in today's process and utility power plants. End users, looking for greater plant yields and higher efficiencies, are operating at elevated pressure and temperature, pushing the upper limits of conventional control valve technology. Often, this results in pipeline vibration, environmentally unfriendly noise and fluid velocity or cavitation induced erosion of critical valve components. These issues have led to development of new generation control valves that are dramatically different from conventional designs.

VECTOR™ trims deliver reliable control, long life and freedom from cavitation, erosion, vibration and noise problems. The design evolved through many decades of experience in solving severe service applications where durability, reliability and control precision are required.

VECTOR™ trims are suitable for compressible and incompressible fluids. This advanced design, fluid velocity controlling trim prevents generation of noise and/or cavitation at the source, eliminating need for supplementary devices such as diffusers, silencers and related expenses. VECTOR™ trims provide many advantages that result in improved performance, reduced maintenance and system simplification.



QUALITY MANUFACTURING

Maintaining the highest standards of quality throughout design, production and customer service is the cornerstone of Koso Kent Introl's philosophy. Our plant is accredited in accordance with Quality Management System ISO 9001 and Environmental Management System ISO 14001. In addition all products, where applicable, conform to ATEX, PED and all other applicable EU Directives and are CE marked accordingly.

The company's standard manufacturing experience includes NACE MR01.75, Norsok, API 6A specifications and individual customer specifications. Our in-house inspection and testing facilities include hardness testing, NDE, PMI, gas and flow testing. Safety is the key element in everything we do, with all employees undergoing both general and specific Health and Safety training.



TYPICAL VECTOR™ APPLICATIONS

VECTOR™ valves are used in severe service applications worldwide. Years of research and experience in numerous applications have proven the superiority of the VECTOR™ valves in critical applications.

POWER APPLICATIONS

- Turbine bypass
- Condenser dump devices
- Turbine stop & control valves
- Main and booster feedpump recirculation
- Startup and main feedwater regulation
- Startup system
- Attemperator spraywater control
- Deaerator level control
- Auxiliary steam
- Soot blower control
- Deaerator pegging steam
- High level (emergency) heater drain
- Steam vent
- Desuperheating systems
- Steam conditioning
- Sampling systems

OIL & GAS APPLICATIONS

- Anti-surge
- Compressor recycle
- Emergency depressurizing
- Emergency steam vents
- Feedwater regulators
- Gas storage injection/withdrawal
- Gas to flare
- Gas treating
- Hot oil letdown
- Import/export
- Methanol injection
- Oil and gas chokes
- Overboard dump
- Pump minimum flow
- Surge relief
- Water injection
- Wellhead pressure control
- CO₂ Re-injection
- WAG (Water Alternating Gas)

PULP & PAPER APPLICATIONS

- Feedpump recirculation
- Feedwater regulation
- Steam conditioning
- Attemperator spraywater control
- Atmospheric vent
- Continuous kiln pressure
- Digester pressure
- Heater injection

LNG APPLICATIONS

- Acid gas separator level control
- Amine pump recirculation control
- Boiler feedwater pump recirculation
- Boiler feedwater regulator
- C2/MCR/BOG compressor anti-surge
- Compressor recycle
- Desuperheating spray
- Emergency depressurizing
- Feedgas regulator
- Hot gas bypass
- JT (Joule Thompson)
- Slug catcher/acid gas separator gas-to-flare
- Slug catcher level control
- Steam header pressure control
- Steam vent



SEVERE SERVICE

PRINCIPLES OF VELOCITY CONTROL

UNCONTROLLED FLUID VELOCITIES CAN BE COSTLY IN MANY WAYS

In conventional valve trims, fluid velocity increases significantly as the fluid is channelled through the restricted flow area where the flow is throttled. The fluid velocity increases in proportion to the pressure drop pushing the fluid through the throttled opening. High velocity fluid passing through a valve's trim is a primary source of problems. This high velocity fluid can cause vibration, erosion, cavitation and high noise levels, all of which can damage critical valve components.

Even before damaging the valve, severe vibration, excessive noise, performance degradation and poor process control can limit the plant's ability to operate at maximum capacity and thereby reduce output. This often results in inferior plant performance, unstable control, seat leakage, increased maintenance and other costly propositions.

Severe service applications, often associated with high pressure drops of liquids, gases or steam are particularly susceptible to high velocity fluid damage. VECTOR™ trims are specifically designed to control the potentially destructive effects of high velocity fluids experienced in some control valves. Unlike valves with conventional designs, VECTOR™ trims ensure fluid velocity never exceed the threshold that could affect system performance or damage critical valve components.

VECTOR™ trims solve these problems at the source with a time-proven design and decades of experience in today's most demanding applications.

SYMPTOMS OF POOR VELOCITY CONTROL

- Unplanned shutdown
- Lost production
- High maintenance costs
- Reduced efficiency
- Manual control required
- Noise
- Trim and body wear
- Pipe and valve vibration
- Leakage
- Pipe erosion

As fluid passes through a conventional valve and its trim, (from left to right in Figure 1), there is a velocity and pressure profile. As the fluid moves from the large area associated with the valve inlet to the much smaller area where the flow is throttled, (or controlled), the fluid velocity goes up. As the velocity (or kinetic energy) of the fluid increases, the pressure energy decreases.

Fluid velocity will reach its highest point and the pressure will drop to its lowest point at the valve's vena contracta, which is slightly downstream of the point where the flow is throttled inside the trim. After passing through the vena contracta, the flow area gets larger, the fluid velocity reduces and some of the fluid pressure recovers.

In a conventional valve, the high velocity fluid passing through the throttling point is controlled by the pressure drop across the valve. Increasing the flow area at the throttling point will have a minimal effect on the fluid velocity. Further reduction in the velocity cannot be achieved by altering the body geometry.

In applications with large pressure drops, the fluid velocities through the throttling point can be more than 10 times higher than the fluid velocities at the inlet and outlet of the valve body. In high pressure drop applications, as shown in Figure 1, the fluid velocity may be high enough to cause vibration, erosion or noise problems.

The velocity and pressure profiles for a valve with VECTOR™ trim are shown in figure 1. VECTOR™ trim breaks the large pressure drop across the valve trim into a series of smaller pressure drops by forcing the fluid through a tortuous path of right angle turns. Because this tortuous flow path is more restrictive than the simple flow path of a conventional valve trim, a larger throttling flow area is needed to pass the same amount of flow. A larger throttling flow area means lower fluid velocities. For any given pressure drop, the fluid velocity can be reduced by increasing the number of stages (or right angle turns) in the VECTOR™ valve trim.

SYMPTOMS OF CAVITATION

- High levels of vibration
- Sporadic, pinging noise, that sounds like rocks passing through the valve
- Valve components showing "pitting" damage

Fig 1 Conventional valve profile (non-compressible fluids)

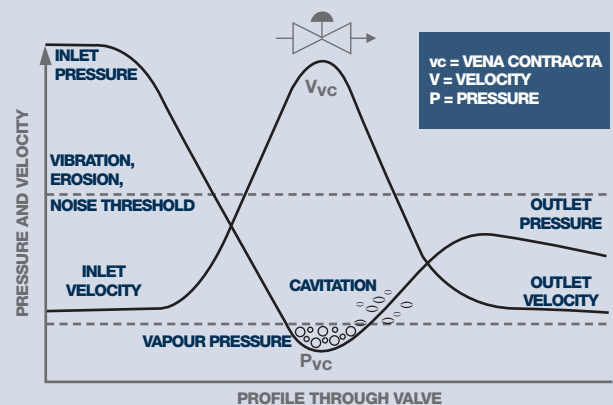
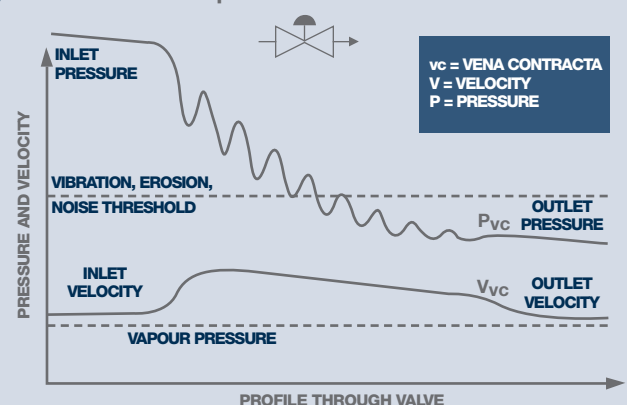


Fig 2 VECTOR™ valve profile



PREVENTING CAVITATION EROSION

In addition to vibration, high velocity fluid erosion and noise, conditions may exist where there is a potential for cavitation related problems. Cavitation can be a source of high levels of vibration, which can lead to damaged valve trim components actuators and piping connections. It can occur in any liquid application.

Referring back to the velocity and pressure profiles shown in Figure 1, for any given liquid, there is a pressure where the liquid will vaporise. The vapour pressure depends on the temperature of the liquid. The vapour pressure line can be anywhere depending on the properties of the non-compressible fluid. It can be below the lowest pressure inside the valve or above the valve inlet pressure (in which case the fluid passing through the valve is a gas).

In Figure 1, the temperature of the fluid is such that the vapour pressure is higher than the fluid pressure at the vena contracta, but lower than the fluid pressure at the outlet of the valve. In this case, at the vena contracta, some of the liquid vaporises as the pressure drops below the vapour pressure. As the pressure recovers in the outlet of the valve body, the fluid's vapour bubbles will collapse back to liquid. This is a violent, high energy process. When the vapour bubbles collapse near metal surfaces, they can tear away the metal, (even fully stellited surfaces), leaving a rough, pitted surface. Often, the metal just downstream of the valve's vena contracta is a seating surface. Once a seating surface is destroyed, the valve will not shut-off.

As shown in Figure 2, the VECTOR™ trim reduces the pressure drop in a series of smaller pressure drops. The pressure recovery at each stage is much less and the vaporisation is less likely to occur. The smaller flow paths and lower fluid velocities associated with the VECTOR™ trim eliminate the damaging effects of cavitation.

SYMPTOMS OF LEAKAGE

- High temperature in the downstream pipe for a normally closed valve
- Loss of process control, even when valve is fully closed
- Steam or gas leaks through vents
- Inability to hold the pressure inside the condenser
- Noise produced by valve even when closed



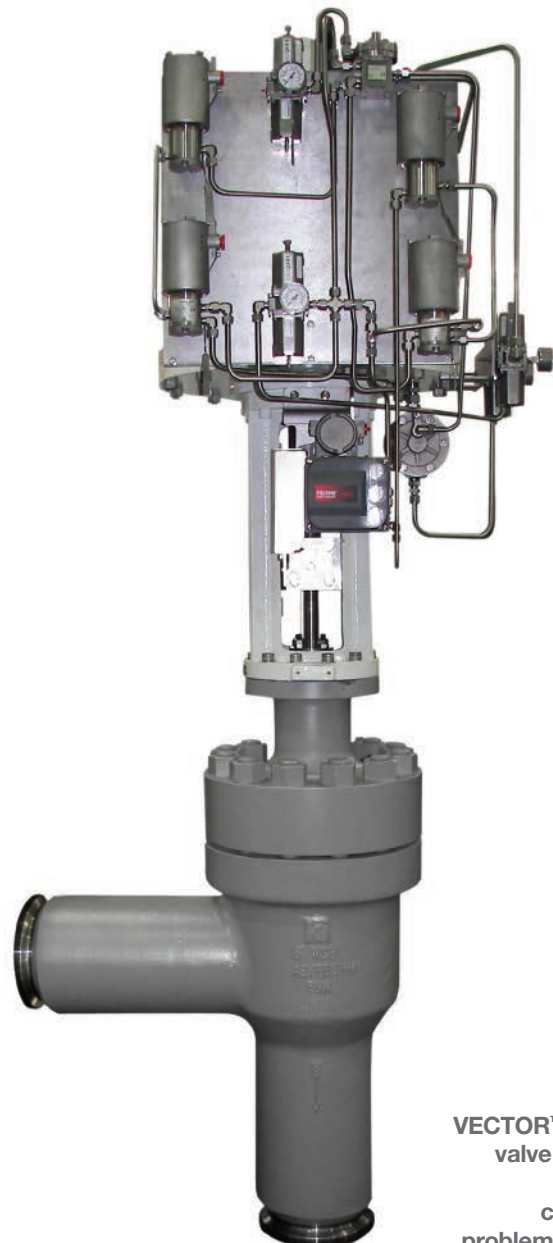
Typical cavitation damage

PREVENTING LEAKAGE

When control valves leak, this can significantly reduce plant efficiency resulting in higher overall operational and maintenance costs. This translates into significant expense every year. Leakage is often manifested in the following ways:

- Unscheduled plant shutdowns
- Increased maintenance schedules to replace damaged valve and system components
- System efficiency losses resulting in increased fuel and power consumption
- Heat rate losses and unit load limitations
- Control system oscillations or outright loss of control

Controlling leakage through a severe service control valve requires a combination of technologies and a dynamic understanding of the behaviour of the fluid as it passes through the valve. Kent Introl engineers understand this and have ensured that the VECTOR™ valve meets our customer's requirements. The VECTOR™ valve provides repeatable tight shutoff and reliable operation to assure customers that the costs associated with system leakage are truly being controlled.



VECTOR™ WI choke valve solution to replace a competitor's problematic choke.

SPECIFICATIONS

Body type	500D series
Body style	Globe, angle
Body size	1" – 42"
Body rating	ASME 150 – 4500 class & API-6A 3000 – 15000
Fluid temperatures	-196°C to 620°C (-320° F to 1150° F)
Connections	Flanges (RF, RTJ), butt welded, socket weld, hubs
Body materials	WCB, LCB, LCC, C5, WC6, WC9, C12A, CF3, CF8M, A105, LF2, LF3, F11, F22, F91, F316, 254SMO, Duplex, AISI 4130, (Others on request)
Trim materials	Carbon Steel, 410 SS, 17-4 PH, F22, F44, F91, 304 SS, 316 SS, Inconel, Duplex, Tungsten Carbide, PSZ (Ceramic)
Rangeability	50:1 (typical)
Flow characteristics	Linear, modified linear, equal percentage
Metal seat leakage	Cv x 0.01%, Class IV or V, MSS-SP61
Soft seat leakage	Class VI
Trim stages	Up to 40 stages
Actuation options	Pneumatic diaphragm or piston, electric, electro-hydraulic, pneumatic or hydraulic stepping



Various VECTOR™ valves supplied to one of the 'supermajors' in the North Sea

VECTOR™ valve supplied for an Anti-Surge duty

VECTOR™ VALVE FEATURES AND ADVANTAGES

BENEFITS	FEATURES	VECTOR™	COMPETITION
Vibration free operation			
Reduce fluid velocity caused erosion			
Eliminate cavitation caused vibration and damage			
Longer cycles between maintenance			
Low noise operation			
May eliminate costly additional equipment (baffle plates, silencers, acoustic lagging...)			
Improve reliability, efficiency and plant output			
Wide control rangeability may eliminate a need for a second valve			
Quicker, less costly maintenance			
Provide repeatable, tight shut-off			
Eliminate costly leakage losses			
Easy to repair seating surfaces			
Lower initial costs			
	Fluid velocity controlling trim addresses problems at their source	✓	
	Designed to meet the pressure drop and capacity needs of the application	✓	
	No welded or screwed-in trim parts	✓	
	“Edge” contact seating, with extra shut-off force	✓	
	High quality, economic design and manufacturing	✓	



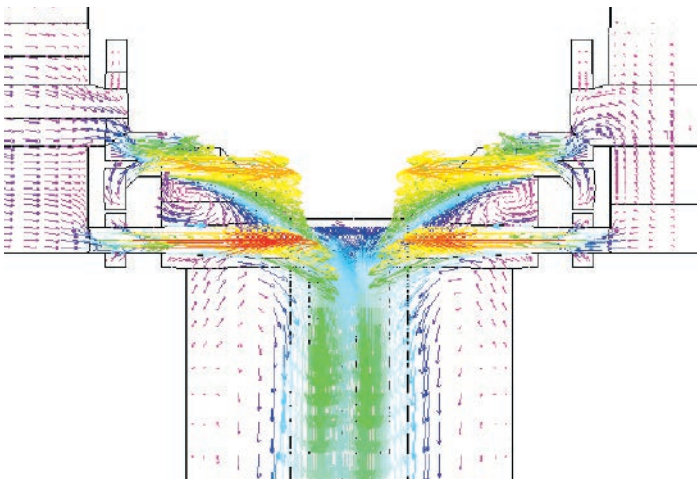
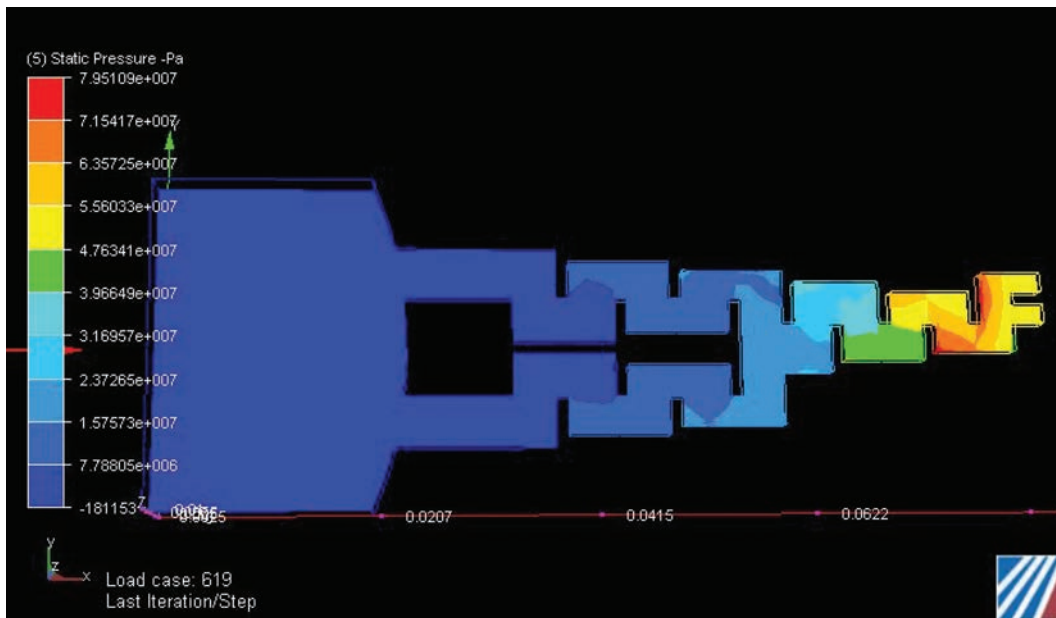
ENGINEERING TOOLS

Koso Kent Introl Limited (KKI) is committed to providing fully analysed and tested valve product for the Severest Service Applications. Our expert engineering staff continually design, develop and test products to meet the ever-changing needs of the industry while supporting products that are already installed and operating throughout the world.

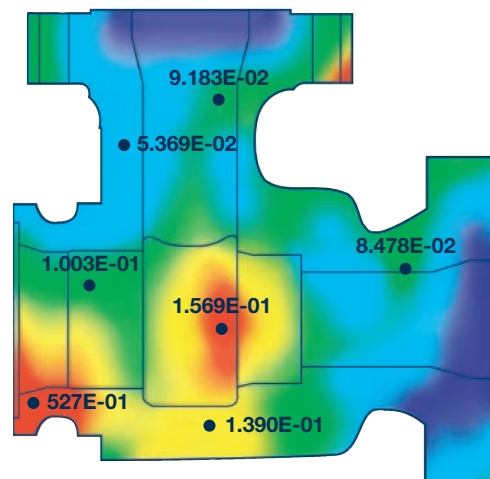
Our engineering staff utilise modern engineering tools, such as 3D Modelling, Finite Element Analysis, and CFD analysis to ensure that the products are designed to the highest level of integrity and reliability.

As a result of the continuous Research & Development and the utilisation of the most up to date Engineering Tools, the Severe Service Valves supplied by KKI are at the cutting edge of control and choke valve technology.

CFD analysis of a sectional VECTOR™ disc



CFD analysis of a valve trim



Body evaluation using Finite Element Analysis

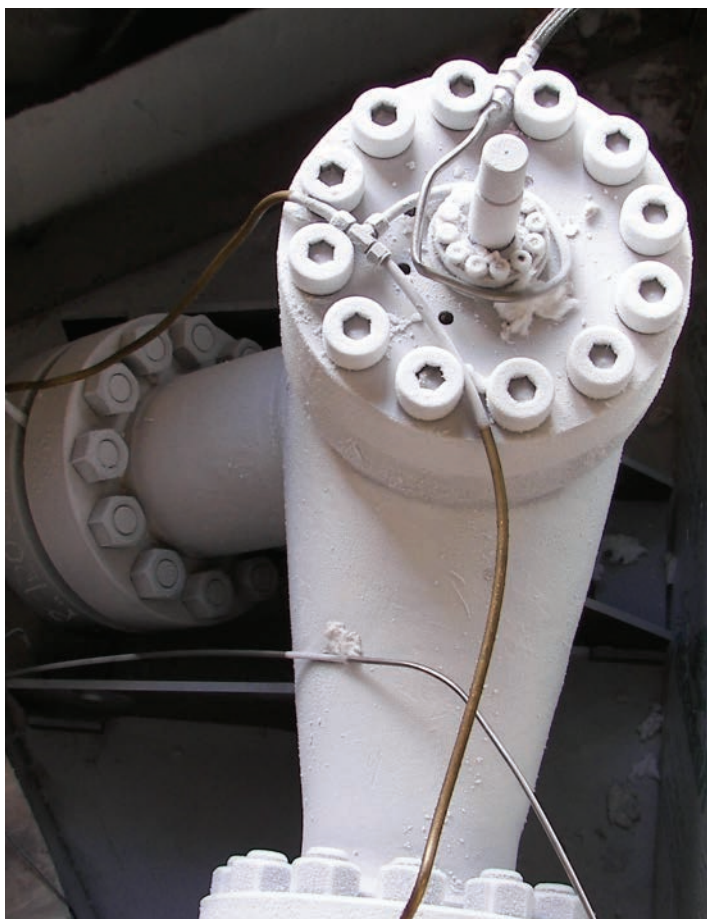
PERFORMANCE TESTING

KKI continually tests their products to ensure that the units meet the ever-changing requirements of the specific industry that the units will be used in.

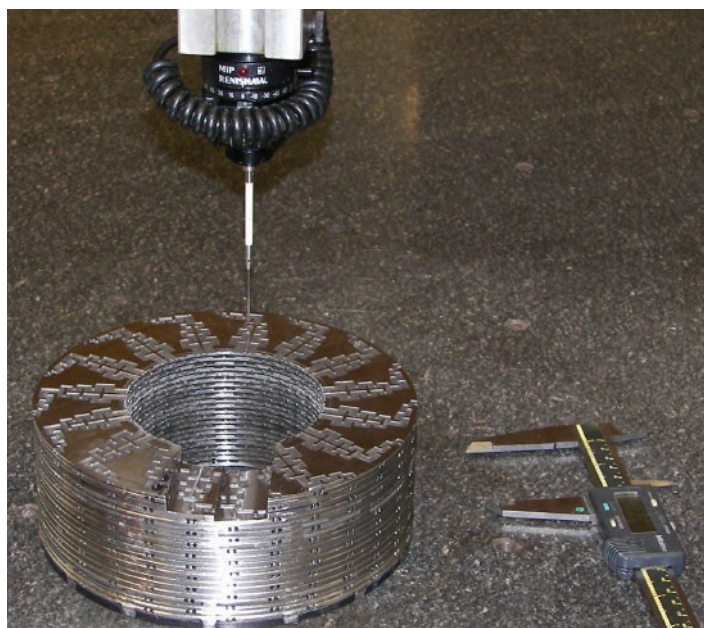
Some of the tests that are carried out include the following:

- Flow Testing – To verify valve size and the trim characteristic
- Bend Testing – To verify the end loads
- High Temperature Testing – To verify suitability at elevated operating temperatures
- Noise Testing – To confirm our noise prediction techniques
- API 6A / 17D Testing – To ensure the products are in accordance with the standards
- Vibration Analysis – To verify the stability of the valve under high-energy applications
- Erosion Qualification & CFD reports – To provide an indication of the life expectancy of a valve trim
- Cryogenic / Low Temperature test – to verify Control Valve operation at sub zero temperatures
- Life Cycle Testing – To simulate and verify the life expectancy of the valve components
- Trim Impact Testing – To verify that the trim will not collapse when hit by large solid contaminants travelling at high velocity
- Emission Testing – To prove that the valve integrity is suitable to prevent leakage to the atmosphere.

VECTOR™ valves during functional testing



Valve during cryogenic testing



Bespoke VECTOR™ disc stack at Kent Introl's R&D facility

KOSO KENT INTROL LIMITED
ARMYTAGE ROAD
BRIGHOUSE
WEST YORKSHIRE
HD6 1QF
UK

TELEPHONE
+44 (0)1484 710311

FACSIMILE
+44 (0)1484 407407

EMAIL
info@kentintrol.com

WEBSITE
WWW.KENTINTROL.COM



KOSO

Koso Kent Introl Limited is part of the KOSO Group of companies.

The company's policy is one of continual development and the right is reserved to modify the specifications contained herein without notice.

Copyright © 2014
All rights reserved Koso Kent Introl Limited