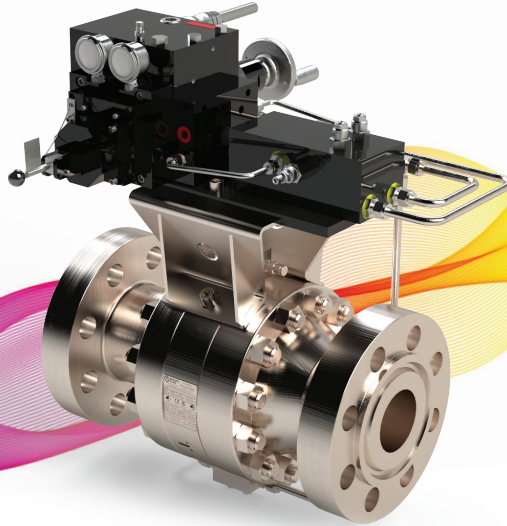


# IntroFlo

## Stemless Actuated Axial Flow Valve

### MODEL: ES

High Performance, Axial Flow Valve with No Mechanical Actuator. For Upstream, Midstream & Downstream Oil & Gas Applications



EMISSIONS  
FREE  
DESIGN

H<sub>2</sub>  
READY

### PRODUCT OVERVIEW

IntroFlo's ES Series actuated valve delivers world-class performance and reliability for oil and gas operations. The ES Series valve uses our direct hydraulic actuation technology to replace the traditional mechanical actuator and drivetrain. This game-changing technology reduces size and weight and minimises maintenance.

IntroFlo ES Series valves are suitable for the most demanding isolation and control applications.

Designed in accordance with API 6D/ASME B16.34 certifications:

- API 6FA Fire Safe.
- Fugitive Emissions ISO 15848-1 Class AH C03.
- Slurry Tested to API 6AV1.

Manufactured and tested to comply with all international valve standards, including but not limited to API, ANSI, ASME, BS, DIN, NORSOK, TR2000 and ISO.

### FEATURES AND BENEFITS

- No mechanical actuator or drivetrain.
- Reliable internal hydraulic actuation.
- Isolation and control options available.
- Dramatically reduced assembly size/weight.
- No moving parts protruding valve housing.
- Eliminates main source of fugitive emissions.
- Debris tolerant.
- Robust and reliable.
- Non-intrusive position sensing.
- Various fail-safe options available.
- Back-up manual hydraulic overrides available.

### SCOPE

- Temperature range -40°C to 140°C (-40°F/284°F).
- Sizes 2" and up.
- Pressure Class ASME #300 - #1500\*.
- Stroke time < 2 seconds.
- Shut Off Class CLASS VI (Soft Seat). CLASS V (Metal Seat).

\*Other pressure classes available on request.

### APPLICATIONS

ES Series valves can replace:

- Ball Valve
- Gate Valve
- Plug Valve
- Butterfly Valve
- Globe Valve
- Stem Actuated Axial Valve

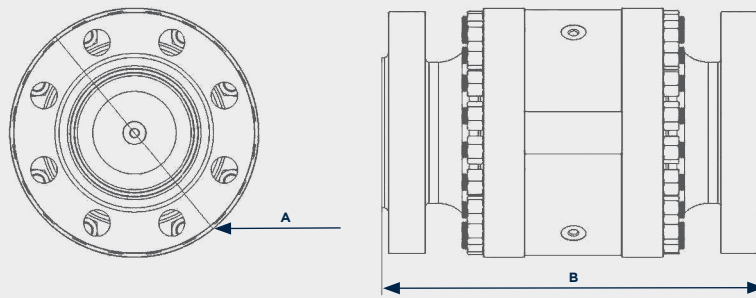
Use with confidence in upstream and midstream infrastructures in the oil and gas sectors.

**kentintrol**  
Design | Engineer | Service

### PERFORMANCE AND SIZING

ES SERIES	C <sub>v</sub>	K <sub>v</sub>
DN050(2")	110	95
DN080(3")	280	240
DN100(4")	500	430
DN150(6")	1125	975
DN200(8")	2000	1725
DN250(10")	3125	2700
DN300(12")	4500	3900

\*Fully open, no cage trim. Control trims available on request.



**KEY DIMENSIONS (mm/in)**

NOMINAL DIAMETER	DIAMETER (A)	LENGTH (B)	WEIGHT(kg/lb)
DN50 (2")	230mm/9.06"		60kg/132lb
DN80 (3")	260mm/10.23"		85kg/187lb
DN100 (4")	300mm/11.81"		148kg/326lb
DN150 (6")	400mm/15.74"	ASME B16.10 (Alternative lengths on request)	275kg/606lb
DN200 (8")	480mm/18.90"		450kg/992lb
DN250 (10")	560mm/22.04"		760kg/1675lb
DN300 (12")	630mm/24.80"		1000kg/2204lb

Larger sizes, custom lengths, and different flange connections available on request

\*ASME #900

**OPERATION**



**CONSTRUCTION MATERIALS**

COMPONENTS	MATERIALS
Body	Stainless steel 316
Closure member	Stainless steel 316
Seat material	Energised PTFE, metal seated options also available
Trim and fittings	Stainless steel 316
Dynamic seals	Spring energised PTFE
Static seals	Elastomer
Casing seals	Spring energised PTFE + Graphite (fire safe) + Elastomer (weatherproof)

\*Alternative materials available on request.



ES-07-23-V3

Reimagining valve technology together:



**DISCLAIMER**  
 Details of products may vary. IntroFlo does not guarantee or warrant the availability of the models described in this Product Sheet or the accuracy or completeness of the details provided. The contents of this Product Sheet shall not form the basis of any contract or representation. Please refer to the relevant Product Data Sheet for technical details of our products.



Armytage Road  
 Brighthouse  
 United Kingdom  
 HD6 1QF

E [introflo@kentintrol.com](mailto:introflo@kentintrol.com)  
 W [www.kentintrol.com](http://www.kentintrol.com)